

Design Refinement 25 – Otterbourne Water Supply Works

Where is the proposed change?

The design refinement is located at the Project's interface with Otterbourne Water Supply Works, between Shawford and Otterbourne, within Winchester City Council's administrative area. It is situated within Section M of the pipeline between Havant Thicket Reservoir and Otterbourne Water Supply Works.

The design we presented at the Summer 2024 Consultation is shown in **Figure 51**.

What is changing and why?

We are proposing the following refinements at Otterbourne Water Supply Works:

- The draft Order Limits have been extended to the north, to include options for temporary construction access to the Water Supply Works. This ensures we have the correct rights to undertake any temporary access works to facilitate construction vehicle access. We have included options to ensure that access can be provided alongside any changes and upgrades to Otterbourne Water Supply Works that are separate to our Project.
- Two areas for environmental mitigation and enhancement have been included in the draft Order Limits to the south of Otterbourne Water Supply Works. One of these areas will provide wet grassland enhancements around an existing watercourse, and the other will provide woodland and scrub enhancements and mitigation for any losses associated with the temporary access. These areas have been added to ensure we align with national planning policy.
- North of Kiln Lane, the draft Order Limits have been extended to enable us to temporarily divert a Public Right of Way that is being crossed by the pipeline. This would ensure that access along this footpath (as diverted) can be retained during construction works.
- The draft Order Limits have also been reduced just south of Oakwood Park Recreational Ground, as ongoing design development identified that this area is no longer required for the Project to connect into Otterbourne Water Supply Works. This area was included in the draft Order Limits at the Summer 2024 Consultation as there was uncertainty around where the Project would connect into the water supply works.
- An area has been added to the draft Order Limits to cover the junction between Kiln Lane and Otterbourne Lane, so we can undertake temporary highway works if needed, to ensure the largest construction vehicles can pass through this junction. These works could involve the realignment of existing kerbs or the removal of traffic islands. Following the completion of construction works we will reinstate these junctions to their current condition in line with Hampshire County Council's requirements. These junctions will be kept open whilst works are undertaken.

The proposed design refinement can be seen in **Figure 52**.

How might the change affect you or the environment?

No changes to the pipeline route and construction compounds are proposed in this area. To facilitate temporary construction access to the pipeline south of Otterbourne Water Supply Works we may need to remove some additional vegetation within the draft Order Limits. Any environmental impacts arising from this vegetation removal will be mitigated through replacement planting.

The routing of construction vehicles along Sparrowgrove and Waterworks Road from Otterbourne Road are also not anticipated to result in any noticeable traffic, air quality, and noise and vibration effects.

The extension of the draft Order Limits to accommodate the environmental mitigation and enhancement areas allows us to mitigate the environmental impacts of the Project deliver environmental improvements that improve the value of existing habitats.

Figure 51 Otterbourne Water Supply Works – Summer 2024 Consultation design

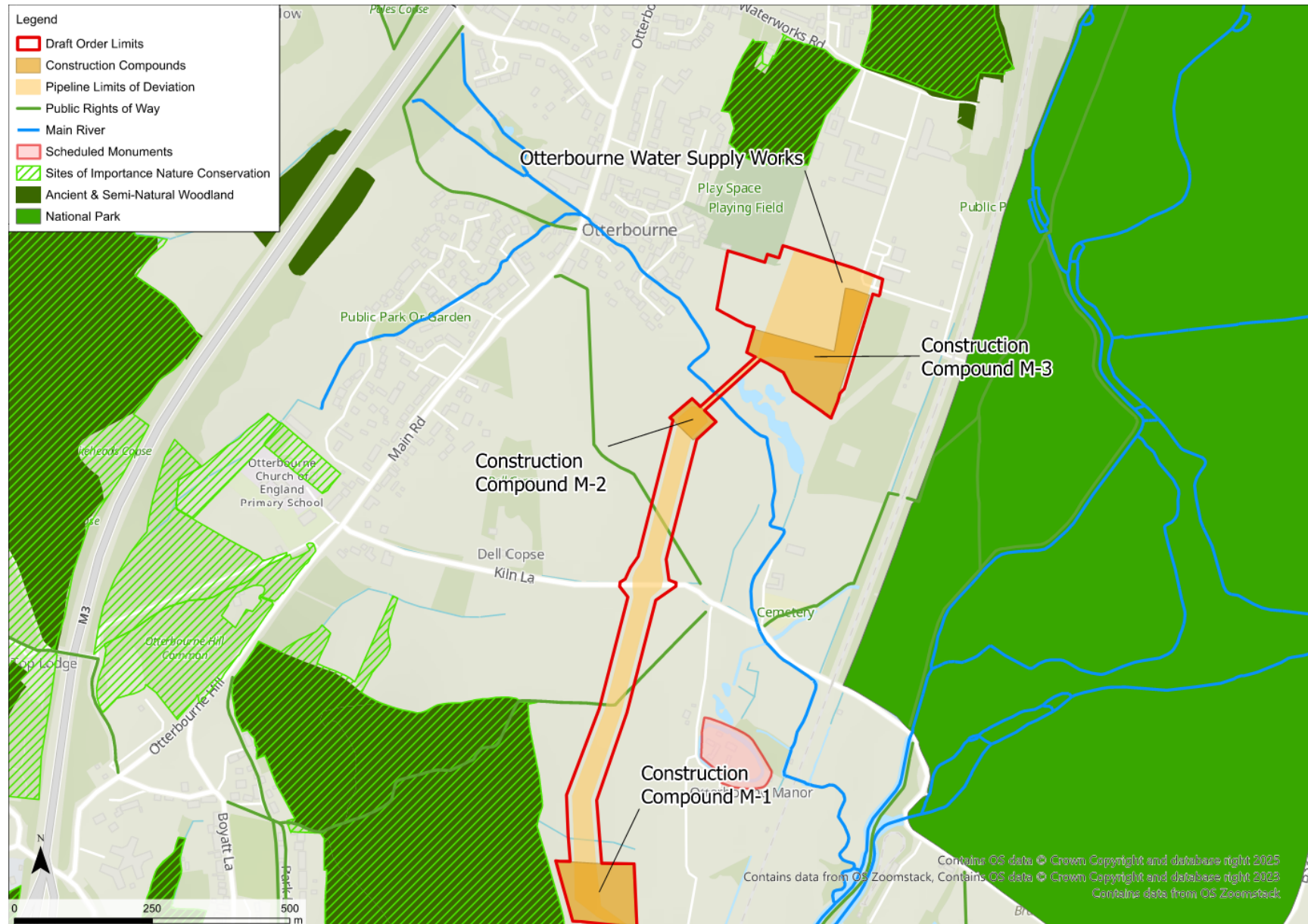


Figure 52 Otterbourne Water Supply Works – Design Refinement

