

Design Refinement 18 – The River Hamble and Ford Farm

Where is the proposed change?

The River Hamble and Ford Farm are both located to the north west of Botley Road, south west of Bishop's Waltham and within Winchester City Council's administrative area. This area is situated within Section K of the pipeline between Havant Thicket Reservoir and Otterbourne Water Supply Works.

The design presented at the Summer 2024 Consultation is shown in **Figure 37**.

What is changing and why?

We have realigned the location of the trenchless crossing of the River Hamble¹ to a location further to the north. This change is proposed for the following reasons:

- Following the Summer 2024 Consultation, ongoing environmental surveys identified two veteran trees close to the pipeline route and northern construction compound K-1, which would be used for trenchless construction under the River Hamble. If we were to keep the trenchless crossing at this location, there would be restricted space for the construction compound and pipeline route when the root protection areas for the veteran trees are considered.
- Our ongoing survey work also identified a number of trees of high quality and value (Category A) at the access point to construction compound J-3 to the south of the River Hamble and Botley Road.
- The previous design also intersected a soft fruit farm at Ford Farm, including an area of the farm which has received planning permission for the development of additional polytunnels. When developing the design of the Project we have aimed to reduce adverse impacts to existing businesses.

The revised location of the trenchless crossing ensures we can reduce vegetation loss and impact to veteran trees in this area and avoids the pipeline route conflicting with the proposed new polytunnels at Ford Farm. The location for this trenchless crossing and associated pipeline route was selected as it had the least technical constraints and environmental impact compared to other options.

Areas for environmental mitigation and enhancement have also been identified, specifically for wet grassland and habitat connectivity improvements along the pipeline route in this area. The areas to the north side of the River Hamble are considered as most suitable for ecology enhancements.

This proposed design refinement can be seen in **Figure 38** overleaf. **Figure 38** shows a new environmental mitigation and enhancement area at the Park Lug. This is described in the information sheet for design refinement 17.

How might the change affect you or the environment?

As part of this proposed design refinement, the draft Order Limits and pipeline have been moved closer to the River Hamble, however we would ensure that construction works remain 30 metres from the watercourse so potential effects are reduced.

The new location of construction compound J-3 will intersect with a Roman road between Wickham and Winchester. We will undertake investigations prior to the commencement of construction to identify any potential impacts on buried archaeology and necessary mitigation.

In some locations, the construction works would be slightly closer to residential properties on Botley Road, however the amendments are not expected to result in any noticeable new air quality or noise and vibration effects compared to those set out in our Preliminary Environmental Information Report presented at the Summer 2024 Consultation. We will implement mitigation measures set out in our Outline Construction

¹A typographical error in this sentence has been corrected, for details please see the 'Consultation Information typographical errors' sheet here <https://hampshirewtwrp.co.uk/typographicalerrors.pdf>.

Environmental Management Plan which will form part of our Development Consent Order application, including limits on working hours and working practices to reduce these effects.

The design refinement will move the construction works closer to a public right of way along the River Hamble (Bishop's Waltham 502). There is potential for increased visibility of construction works from the public right of way, however the implementation of mitigation would reduce this impact and which could include reducing vegetation loss and using visual screening.

The addition of environmental mitigation and enhancement areas also allows the delivery of habitat improvements in this area which will support local ecology.

Figure 37 River Hamble and Ford Farm – Summer 2024 Consultation design

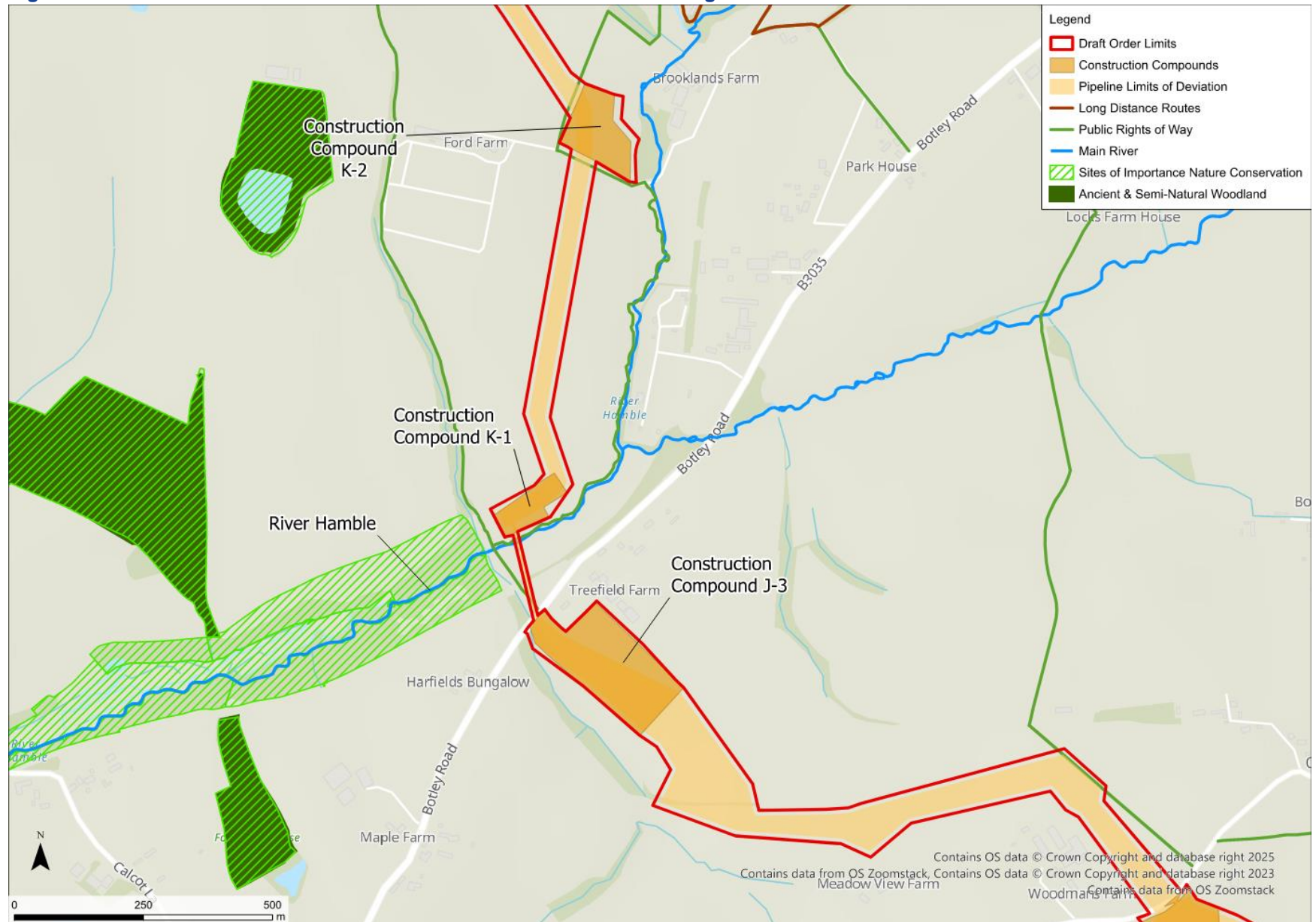


Figure 38 River Hamble and Ford Farm – Design Refinement

